

SVO-9500MD SERIES

S-VHS Videocassette Recorder

The SVO-9500MD S-VHS recorder is specifically designed for medical applications. Its digital frame memory provides a noiseless, crystal clear "freeze" and is fully compatible with other S-VHS (or VHS) tape recordings. Its compact design and optional control via RS-232C or 34-pin interface provide convenient integration with ultrasound, endoscopy and pathology systems.

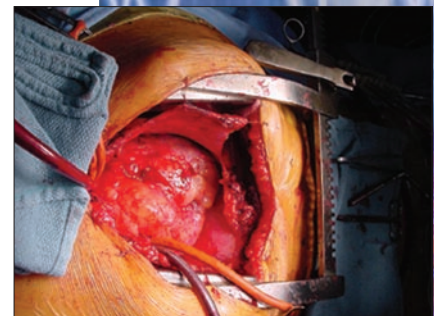


SVO-9500MD

- Digital frame memory (field/frame selectable, 8 bit depth) allows noiseless, crystal clear "freeze"
- Built-in time base corrector produces stable color playback clarity in freeze, normal play and jog/shuttle modes
- Outstanding luminance and chrominance performance
- IzzitOn™ System provides visual recording confirmation
- RS-232C serial (25 pin) or parallel (34 pin) interface available
- Remote control with jog/shuttle available
- Compact design
- Quick response to all operational commands
- Simplified, user friendly front panel
- Selectable hi-fi audio
- Automatic search to end of last recording on tape
- Industrial grade transport mechanism
- Auto head cleaning mechanism
- UL 2601-1, EN 60601-1

"IzzitOn?"

SONY®



Sony Medical

SVO-9500MD

Specifications

SVO-9500MD

GENERAL

Video Recording System	Rotary 2-head helical scan system
Luminance	FM azimuth recording
Chrominance	Converted subcarrier direct recording
Video Signal System	NTSC, Standard color signal
Power Requirements	AC 120V, 60 Hz, 0.6A less than 72 VA
Power Consumption	Less than 61W
Dimensions	10-3/4"W x 5-1/4"H x 14-1/2"D 270 x 132 x 366mm
Weight	Approx. 22lbs. 1oz. (10 Kg)
Storage Temperature	-20 to +55°C (-4°F to + 131°F)
Operating Temperature	+5 to +45°C (+41°F to +113°F)

Video Signals

Input	BNC;1.0Vp-p, 75 ohms unbalanced S-in (4P); Y: 1.0Vp-p, 75 ohms unbalanced C: 0.286Vp-p, 75 ohms unbalanced at burst level
Output	BNC; 1.0Vp-p, 75 ohms unbalanced S-out (4P); Y: 1.0Vp-p, 75 ohms unbalanced C: 0.286Vp-p, 75 ohms unbalanced at burst level

Signal-to-Noise Ratio	More than 46dB
-----------------------	----------------

Audio Signals

Input	LINE IN; CH-1/CH-2 (RCA PIN) -10dBu, 47k ohm, unbalanced Microphone; Normal audio CH-1 only (RCA Q Jack) for 600 ohm mic -60dBu, 3k ohm, unbalanced
Output	AUDIO MONITOR; (RCA PIN) -5dBu, 47k ohm, unbalanced LINE OUT; CH-1/CH-2 (RCA PIN) -10dBu, 47k ohm, unbalanced

Frequency Response	50Hz to 12kHz at Normal audio, 20 Hz to 20kHz at HiFi audio
--------------------	-------------------------------------------------------------

Signal-to-Noise Ratio	More than 43dB (at 3% distortion level), Normal audio
-----------------------	-------------------------------------------------------

Tape Format / Tape Speed	S-VHS/VHS 33.35mm/sec.
--------------------------	------------------------

Recording or Playback Time	120 minutes with T-120
----------------------------	------------------------

Fast Forward and Rewind Time	Within 3.5 minutes with T-120
------------------------------	-------------------------------

Freeze Pictures	Digital frame memory (field, frame selectable, 8 bit depth/pixel)
-----------------	-------------------------------------------------------------------

Auto Repeat Playback	Auto repeat playback between any two marked points
----------------------	----------------------------------------------------

Blank Search	Automatically searches for the end of the last recording
--------------	----------------------------------------------------------

Digital Chroma Noise Reducer & Time Base Corrector	6 bit depth/pixel sampling f; 4 fsc, field correlate noise reduction
----------------------------------------------------	----------------------------------------------------------------------

Index Search (VISS)	Up to 30 index points can be set with optional remote control unit (SVRM-100A)
---------------------	--------------------------------------------------------------------------------

Foot Switch Terminal	Record, start and pause can be controlled with optional Foot Switch (FS-20)
----------------------	-----------------------------------------------------------------------------

REGULATION COMPLIANCE	UL 2601-1, EN 60601-1
-----------------------	-----------------------

Warranty	1 year parts and 1 year labor
----------	-------------------------------

ACCESSORIES

Supplied Accessories	AC power cord Operation manual
----------------------	--------------------------------

Optional Accessories	SVBK-120 - RS232C Serial (25-pin female) I/F SVBK-110 - Parallel (34-pin female) I/F SVRM-100A - Remote Control with Jog/Shuttle FS-20 - Foot Switch Record/Pause Trigger Device
----------------------	-------------------------------------------------------------------------------------------------------------------------------------------------------------------------------------------

Product Packages	SVO-9500MD2 with RS-232C serial (25-pin F) interface SVO-9500MD4 with Parallel (34 pin) interface
------------------	------------------------------------------------------------------------------------------------------



SVO-9500MD Back Panel

SONY

Sony Electronics Inc.
1 Sony Drive, Park Ridge, NJ 07656

www.sony.com/medical

©2001 Sony Electronics Inc. All rights reserved. Reproduction in whole or in part without written permission is prohibited. Features and specifications are subject to change without notice. All non-metric weights and measures are approximate. Sony and IzzitOn are the trademarks of Sony.
Caution: Federal (USA) law restricts this device to sale by or on the order of a physician or other appropriately licensed medical professional.
Caution: See product labeling for indications, contraindications, warnings, cautions and directions for use.